



S-Band Integrated Sector Antenna

WR-INT-ANT-SYS-01

Extended coverage. Maximum performance

The power of the Wave Relay® MANET integrated directly into an antenna extends the enterprise to the edge and over large geographic areas.

Simple installation

- Wave Relay® MANET integrated directly into antenna
- No external RF cabling reduces hassle and loss of gain
- Simple mounting bracket for quick setup
- One cable for Power + Data
- Adjustable downtilt for complete coverage

More data over longer ranges

- MIMO technology delivers high throughput at long range
- Custom antenna polarisation designed to maximise radio performance
- No external RF cabling allows you to leverage the full gain of the antenna
- High throughput allows you to blanket large geographic areas with coverage

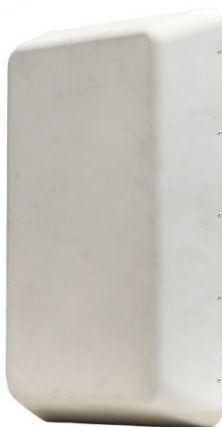
Made for durability

- Built for long-term installation on towers, buildings, and poles
- IP66 rated to protect against weather
- Weatherproof Ethernet connector means you don't have to climb towers in inclement weather to adjust



Specifications

Frequency	2.2 - 2.5 GHz	Operating System	Android™ 6.0 (Marshmallow)
Polarisation	Slant L/R & Vertical	Processor	1 GHz Quad Core ARM
Gain	12 dBi	RAM	2GB
Transmit Power	10W	Storage	32GB Flash
Port-to-port Isolation	>30 dB	Crypto Modes	CTR-AES-256 Encryption SHA-256 HMAC
Horizontal Beamwidths (-3 dB)	120°	Hardware	Cryptographic Acceleration Suite-B Algorithms
Vertical Beamwidths (-3 dB)	11°	Ethernet	10/100 Mbps
Dimensions	66 x 42.5 x 15 cm (26 x 16.7 x 5.9 in.)	Integrated & Extension	Seamless layer 2 network
Weight (Integrated Antenna Only)	4.5 kg (10 lbs.)	Protocols	Advanced multicast algorithms IPv4 and IPv6 compatible Integrated DHCP server
Mounting	1" to 2" Pole Mounting Kit 0° to -15° Elevation Downtilt Adjustment	MANET	Wave Relay® Self-Forming/Healing Peer-to-Peer No Master Node
Operating Temperature	-40°C to +60°C (-40°F to 140°F)	Node Entry Time	<1 sec.
Interfaces	Power + Ethernet (IP66 RJ45)	Max. Number of Hops	No Limit
Lightning Protection	Integral surge suppression	Max. Number of Nodes	No Limit
Power Input	100 - 240 VAC 50/60 Hz 24 - 48 VDC	Max. Distance Between Nodes	130 mi
Peak Power Consumption	45W		
20% Duty Cycle Power Consumption	12.1W		



S-Band_Integrated_Sector_Antenna_Datasheet_08-2024_Rev2.pdf

Technical Specifications quoted are verified but do not indicate the maximum performance limitations of the equipment. Specifications are subject to change without notice. E & OE Issue A.

